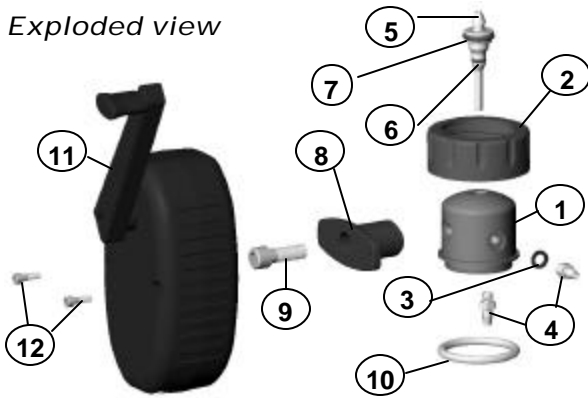


M4 Manual Fueling System



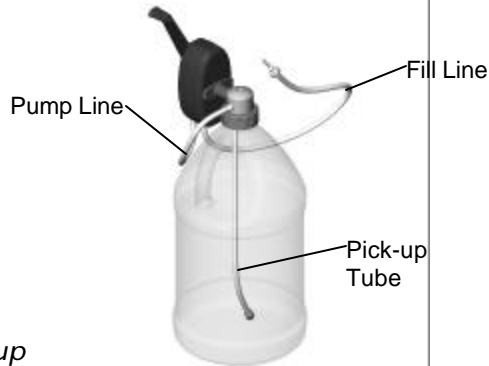
- Safely fuel any Glow Fuel Model
- Complete fueling system
- Airtight O-Ring seal keeps Fuel Factory Fresh
- Fits standard 1 Gallon Glow Fuel Bottle (not included)
- Machined to accept F1 & Excel Glow Fuel Fill Nozzle

Exploded view



Parts List & Instructions

- Place O-Ring (10) on Pro Cap main body (1)
- Slide Pro Cap Nut (2) over main body (1)
- Install washer (3) & fittings (4) on side & bottom of Pro Cap main body
- Install bracket (8) onto Pro Cap main body (1) with screw (9)
- Install Pump (11) onto bracket (8) with screws (12)
- Assemble O-Rings (6) & (7) onto Fill Nozzle (5)
- Cut 7" of Silicone & attach to Pump (11) & Pro Cap fitting (4)
- Cut 12" of Silicone & attach to bottom fitting (4) of Pro Cap main body (1)
- Use balance of Silicone as Fill line, attach to Pump (11) and Fill Nozzle (5)



Set-up

Item	Qt	Description	Item	Qt	Description
1	1	Pro Cap Main Body	7	1	Fill Nozzle O-Ring Grip
2	1	Pro Cap Nut	8	1	Pump Mounting Arm
3	2	Nylon Washer #10	9	1	1/4-20x3/4 Screw
4	2	Barb Fittings 10-32	10	1	Glow O-Ring Large
5	1	Universal Fill Nozzle	11	1	Manual Fuel Pump
6	1	Glow O-Ring Small	12	2	4-40x1/2 Screw

Warranty

Slimline warrants the original consumer/purchaser of this product that it will be free of defects in material and workmanship for one year from the date of purchase. Warranty does not cover any damages caused by misuse, wear, abuse, alteration or accident. During the warranty period the product will be either repaired or replaced without a charge.

For repair enclose your proof of purchase and \$7.50 (US only) for return shipping and handling.

Slimline Products

P.O. Box 3295
 Scottsdale, AZ 85271
 Phone: 480-967-5053
 E-mail: info@slimlineproducts.com
 Web: www.slimlineproducts.com

**Slimline Products are proudly
 designed and manufactured in
 the U.S.A.**

Slimline
 PRODUCTS